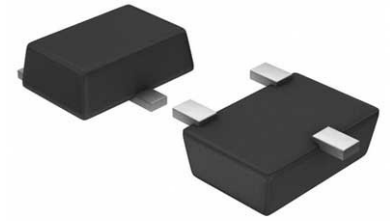


Processor Supervisor 3.3V 1 Active Low/Open Drain 5-Pin SSOP T/R



Images are for reference only

[Inquiry](#)

Manufacturer: [ROHM Semiconductor](#)

Package/Case: SOT23-5

Product Type: Power Management ICs

RoHS: RoHS Compliant/Lead free 

Lifecycle: Active

General Description

ROHM CMOS reset ICs provide low current consumption and high accuracy. The extensive lineup includes both Nch Open Drain and CMOS output types in a wide range of detection voltages (from 2.3V to 6.0V, in 0.1V steps), enabling selection of the ideal solution based on customer requirements. In addition, the entire series is of course both lead-free and RoHS-compliant.

Key Features

Open Drain output type

0.9 μ A Typical ultra-low current consumption

\pm 1% High detection voltage accuracy

Recommended For You

BD5230G-TR

ROHM Semiconductor

SOT23-5

BD6222HFP-TR

ROHM Semiconductor

HRP7

BD6211F-E2

ROHM Semiconductor

SOP8

BD001A5MEFJ-ME2

ROHM Semiconductor

HTSOP8

BD6237FM-E2

ROHM Semiconductor

HSOP-M28

BD48K33G-TL

ROHM Semiconductor

SOT23

BD9G101G-TR

ROHM Semiconductor

SOT-23-6

BD9781HFP-TR

ROHM Semiconductor

TO263-7

BD00GA5WEFJ-E2

ROHM Semiconductor

HTSOP8

BD2204GUL-E2

ROHM Semiconductor

VCSP50L1

BD9D320EFJ-E2

ROHM Semiconductor

HTSOP8

BD2051AFJ-E2

ROHM Semiconductor

SOP8

BD450M2FP3-CE2

ROHM Semiconductor

SOT-223

BD450M5WFPJ-CZE2

ROHM Semiconductor

TO252-J5F

BD63860EFV-E2

ROHM Semiconductor

HTSSOP28