
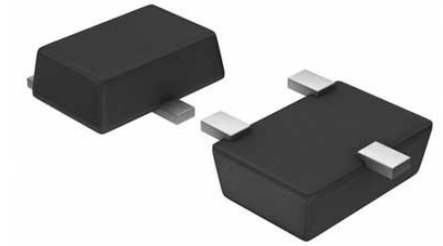


V-Ref Adjustable 1.24V to 6V 15mA 3-Pin SOT-23 T/R

Manufacturer:	Texas Instruments, Inc
Package/Case:	SOT23-3
Product Type:	Power Management ICs
RoHS:	RoHS Compliant/Lead free 
Lifecycle:	Active



Images are for reference only

[Inquiry](#)

General Description

The TPS3600 family of supervisory circuits monitor and control processor activity. In case of power-fail or brownout conditions, the backup-battery switchover function of TPS3600 allows to run a low-power processor and its peripherals from the installed backup battery without asserting a reset beforehand.

During power on, RESET is asserted when the supply voltage (VDD or VBAT) becomes higher than V_{res} . Thereafter, the supply voltage supervisor monitors VOUT and keeps RESET output active as long as VOUT remains below the threshold voltage (VIT). An internal timer delays the return of the output to the inactive state (high) to ensure proper system reset. This delay timer starts its time-out, after VOUT has risen above the threshold voltage (VIT). In case of a brownout or power failure of both supply sources, a voltage drop below the threshold voltage (VIT) get detected and the output becomes active (low) again. The product spectrum is designed for supply voltages of 2 V, 2.5 V, 3.3 V, and 5 V. The circuits are available in a 14-pin TSSOP package. They are characterized for operation over a temperature range of -40°C to 85°C .

Key Features

Supply Current of 40 μ A (Max)

Precision Supply Voltage Monitor

2.0 V, 2.5 V, 3.3 V, 5.0 V

Other Versions on Request

Watchdog Timer With 800-ms Time-Out

Backup-Battery Voltage Can Exceed VDD

Power-On Reset Generator With Fixed 100-ms Reset Delay Time

Battery OK Output

Voltage Monitor for Power-Fail or Low-Battery Monitoring

Manual Switchover to Battery-Backup Mode

Chip-Enable Gating -3 ns (at VDD = 5 V) Max. Propagation Delay

Manual Reset

Battery Freshness Seal

14-Pin TSSOP Package

Temperature Range ...-40°C to 85°C

typical applications

Fax Machines

Set-Top Boxes

Advanced Voice Mail Systems

Portable Battery Powered Equipment

Computer Equipment

Advanced Modems

Automotive Systems

Portable Long-Time Monitoring Equipment

Point of Sale Equipment

Recommended For You

TL2843P

Texas Instruments, Inc

DIP8

TL431CP

Texas Instruments, Inc

DIP8

TL7705ACDR

Texas Instruments, Inc

SOP8

TL3843P

Texas Instruments, Inc
DIP8

TL497ACN

Texas Instruments, Inc
DIP14

TL3845P

Texas Instruments, Inc
DIP8

TL494CD

Texas Instruments, Inc
SOP-16

TL431IDBVR

Texas Instruments, Inc
SOT23-5

TL494CN

Texas Instruments, Inc
DIP

TL431CDBVR

Texas Instruments, Inc
SOT23-5

TL7705ACP

Texas Instruments, Inc
DIP8

TL3842P

Texas Instruments, Inc
DIP8

TLV73325PDBVT

Texas Instruments, Inc
SOT23-5

TLV73333PDBVR

Texas Instruments, Inc
SOT23-5

TL431BIDBZT

Texas Instruments, Inc
SOT23-3