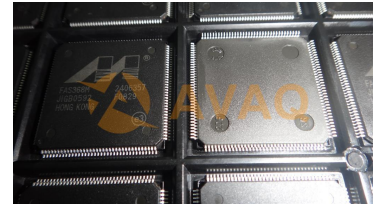


Fast Architecture SCSI Processor

Manufacturer:	Marvell Semiconductor
Package/Case:	QFP
Product Type:	Discrete Semiconductor Modules
Lifecycle:	Unconfirmed



Images are for reference only

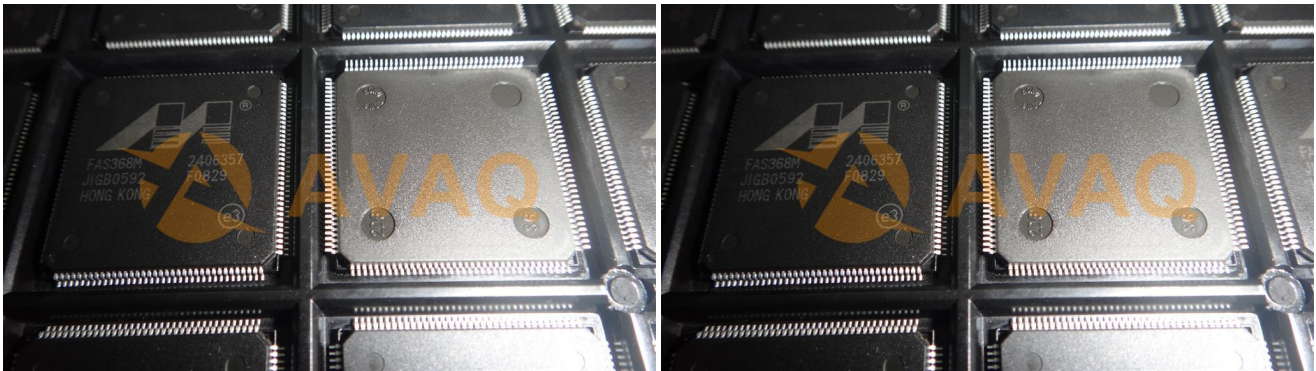
[Inquiry](#)

General Description

Avaq Semiconductor offers the highly versatile and reliable FAS368M driver, produced by Marvell Semiconductor. With its multifunctional and high-performance capabilities, this component is an excellent choice for a wide range of electronic projects.

To ensure that you have all the necessary information to make the most of this component, Avaq provides a free datasheet PDF, as well as circuit diagrams, pin layouts, pin details, pin voltage ratings, and equivalent components for the FAS368M.

Avaq also offers free samples. Simply fill out and submit the sample request form to receive your free samples for testing. If you have any questions, please feel free to contact us at ar



Recommended For You

FAS466

Marvell Semiconductor

QFP

88DE2750-B0-B1F2C000

Marvell Semiconductor

BGA

88DE2755B1-B1F2C000

Marvell Semiconductor

BGA256