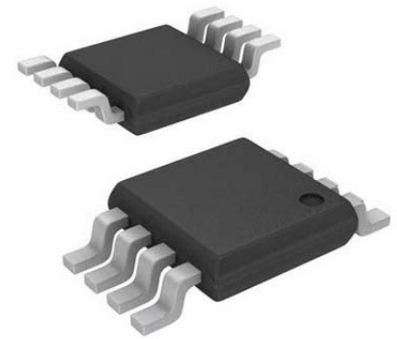


Pwr Mux Autoswitch 1.5V to 5.5V 1.25A 8-Pin TSSOP Tube



Images are for reference only

[Inquiry](#)

Manufacturer: [Texas Instruments, Inc](#)

Package/Case: TSSOP8

Product Type: Switches

RoHS: RoHS Compliant/Lead free 

Lifecycle: Active

General Description

Key Features

Two-Input, one-output power multiplexer with Low $r_{DS(on)}$ switches 84mR typical

Reverse and cross-conduction blocking

0.5 μ A (typical) Low standby current

55 μ A (typical) Low operating current

Adjustable current limit

CMOS- and TTL-compatible control inputs

Auto-switching operating mode

Thermal shutdown

Recommended For You

TPD3S014DBVR

Texas Instruments, Inc

SOT23-6

TPS2065CDBVR

Texas Instruments, Inc

SOT23-5

TPS2557DRBT

Texas Instruments, Inc

SON8

TPS2042BDR

Texas Instruments, Inc

SOP8

TPS2051BDR

Texas Instruments, Inc

SOP8

TPL7407LPWR

Texas Instruments, Inc

TSSOP16

TPS23753APWR

Texas Instruments, Inc
TSSOP14

TPS2116DRLR

Texas Instruments, Inc
SOT5X3-8

TPS259460ARPWR

Texas Instruments, Inc
VQFN-10

TPS23751PWPR

Texas Instruments, Inc
HTSSOP16

TPS65150QPWRQ1

Texas Instruments, Inc
HTSSOP-24

TPS2410PWR

Texas Instruments, Inc
TSSOP-14

TPS22914BYFPR

Texas Instruments, Inc
DSBGA4

TPS2115ADRBR

Texas Instruments, Inc
VSON8

TPS2113ADRBR

Texas Instruments, Inc
SON8