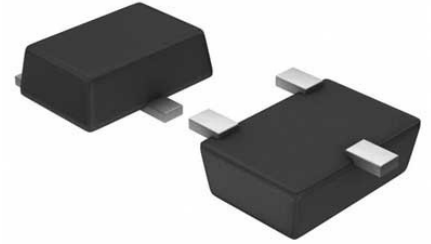


Low-Power Crystal-Based Ask Transmitter 8-Pin SOT-23

Manufacturer:	Maxim Integrated
Package/Case:	SOT23-8
Product Type:	RF Integrated Circuits
Lifecycle:	Obsolete



Images are for reference only

[Inquiry](#)

General Description

The MAX146/MAX147 12-bit data-acquisition systems combine an 8-channel multiplexer, high-bandwidth track/hold, and serial interface with high conversion speed and low power consumption. The MAX146 operates from a single +2.7V to +3.6V supply; the MAX147 operates from a single +2.7V to +5.25V supply. Both devices' analog inputs are software configurable for unipolar/bipolar and single-ended/differential operation. The 4-wire serial interface connects directly to SPI/ QSPI and MICROWIRE devices without external logic. A serial strobe output allows direct connection to TMS320-family digital signal processors. The MAX146/MAX147 use either the internal clock or an external serial-interface clock to perform successive-approximation analog-to-digital conversions. The MAX146 has an internal 2.5V reference, while the MAX147 requires an external reference. Both parts have a reference-buffer amplifier with a $\pm 1.5\%$ voltage-adjustment range. These devices provide a hard-wired SHDN-bar pin and a software-selectable power-down, and can be programmed to automatically shut down at the end of a conversion. Accessing the serial interface automatically powers up the MAX146/MAX147, and the quick turn-on time allows them to be shut down between all conversions. This technique can cut supply current to under $60\mu\text{A}$ at reduced sampling rates. The MAX146/MAX147 are available in 20-pin DIP and SSOP packages. For 4-channel versions of these devices, see the MAX1246/MAX1247 data sheet.

Application

Battery-Powered Applications

Data Acquisition

Medical Instruments

Pen Digitizers

Portable Data Logging

Process Control

Recommended For You

MAX2309EGI

Maxim Integrated

QFN

MAX2021ETX

Maxim Integrated

QFN

MAX2150ETI

Maxim Integrated

QFN

MAX2608EUT

Maxim Integrated

SOT23-6

MAX2829EIN+

Maxim Integrated

QFN56

MAX2606EUT

Maxim Integrated

SOT23-6

MAX2015EUA+

Maxim Integrated

MSOP8

MAX2051ETP+

Maxim Integrated

QFN-52

MAX41461GUB+

Maxim Integrated

MSOP10

MAX2769ETI+T

Maxim Integrated

QFN28

MAX4003EUA+T

Maxim Integrated

MSOP8

MAX1473EUI

Maxim Integrated

TSSOP28

MAX2674EWT+T

Maxim Integrated

6WLP

MAX4003EUA+

Maxim Integrated

MSOP8

MAX2659ELT+T

Maxim Integrated

UDFN-6