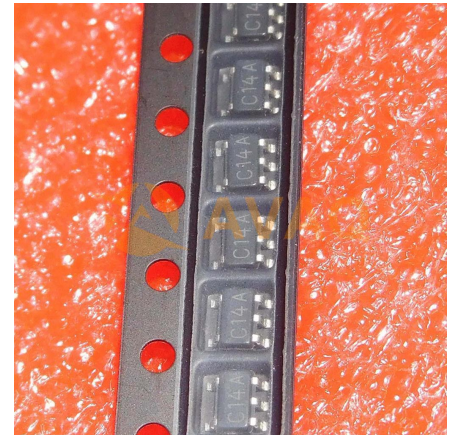


Comparator Single R-R O/P 5V 5-Pin SOT-23 T/R

Manufacturer:	<u>Texas Instruments, Inc</u>
Package/Case:	SOT23-5
Product Type:	Linear Displacement Sensors
Lifecycle:	Active



Images are for reference only

[Inquiry](#)

General Description

The LMV7219 is a low-power, high-speed comparator with internal hysteresis. The LMV7219 operating voltage ranges from 2.7 V to 5 V with push-pull rail-to-rail output. This device achieves a 7-ns propagation delay while consuming only 1.1 mA of supply current at 5 V.

The LMV7219 inputs have a common mode voltage range that extends 200 mV below ground, allowing ground sensing. The internal hysteresis ensures clean output transitions even with slow-moving inputs signals.

The LMV7219 is available in the SC-70 and SOT-23 packages, which are ideal for systems where small size and low power are critical.

Key Features

Input common-mode voltage range extends 200mV below ground

Internal hysteresis ensures clean switching

1.3ns Fast rise and fall time



Recommended For You

LM311MX

Texas Instruments, Inc
SOP8

LM348D

Texas Instruments, Inc
SOP-14

LM224N

Texas Instruments, Inc
DIP14

LM239J

Texas Instruments, Inc
CDIP14

LMV331M5

Texas Instruments, Inc
SOT23-5

LM393ADR

Texas Instruments, Inc
SOP8

LM293DR

Texas Instruments, Inc
SOP8

LM293D

Texas Instruments, Inc
SOP8

LMV824MIX

Texas Instruments, Inc
TSSOP

LMV358M

Texas Instruments, Inc
SOP8

LMV321M5

Texas Instruments, Inc
SOT23-5

LM741H

Texas Instruments, Inc
CAN8

LM193AH

Texas Instruments, Inc
CAN8

LM111H/NOPB

Texas Instruments, Inc
CAN8

LM119H

Texas Instruments, Inc
CAN10