

Intelligent Power Module, 600V, 20A

Manufacturer:	ON Semiconductor, LLC	FSBB20CH60C Image
Package/Case:	SPM-27	Images are for reference only
Product Type:		Inquiry
Lifecycle:	NRND	

General Description

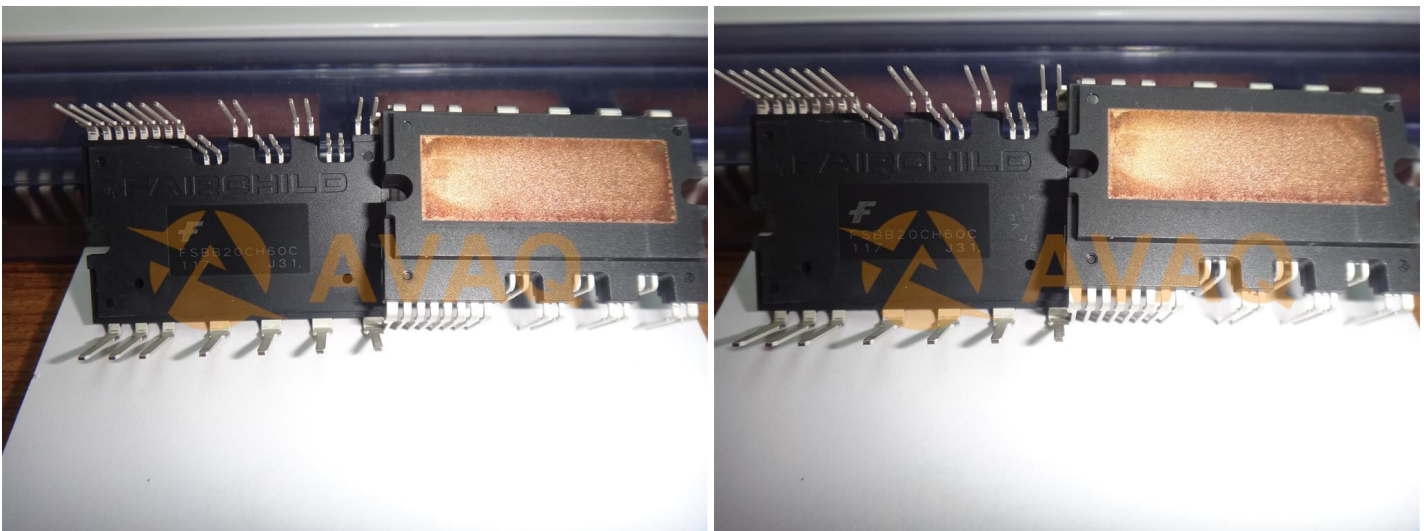
FSBB20CH60C is an advanced Motion SPM² 3 series that ON Semiconductor has newly developed to provide a very compact and high performance inverter solution for AC motor drives in low-power applications such as air conditioners. It combines optimized circuit protections and drives matched to low-loss IGBTs. The system reliability is further enhanced by the integrated under-voltage lock-out and over-current protection. The high speed built-in HVIC provides optocoupler-less single-supply IGBT gate driving capability that further reduces the overall size of the inverter system. Each phase leg current of the inverter can be monitored thanks to three separate negative dc terminals.

Key Features

- 2
- 0
- 3

Application

Motion Control - Home Appliance/Industrial Motor



Recommended For You

FSBB15CH60

ON Semiconductor, LLC
SPM27

FSFR1800

ON Semiconductor, LLC
SIP-9

FSFR1800US

ON Semiconductor, LLC
SIP9

FSBB20CH60F

ON Semiconductor, LLC
MODULE

FSFR1800HSL

ON Semiconductor, LLC
SIP-9

FSBS15CH60

ON Semiconductor, LLC
MODULE

FSBB30CH60C

ON Semiconductor, LLC
SPM27

FSB50250AS

ON Semiconductor, LLC
SPM23

FSBF5CH60BS

ON Semiconductor, LLC
MODULE

FSB50450UD

ON Semiconductor, LLC
SPM23-HD

FSBS10CH60L

ON Semiconductor, LLC
MODULE

FSBS5CH60

ON Semiconductor, LLC
SPM27

FSBB15CH60C

ON Semiconductor, LLC
SPM27

FSFR2100

ON Semiconductor, LLC
SIP9

FSAB20PH60

ON Semiconductor, LLC
MODULE