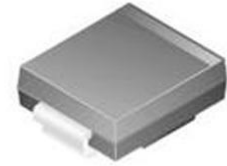


## TVS Diode Single Uni-Dir 48V 1.5KW Automotive 2-Pin SMC T/R



Images are for reference only

[Inquiry](#)

**Manufacturer:** [STMicroelectronics, Inc](#)

**Package/Case:** SMC

**Product Type:** Thyristors

**Lifecycle:** Active

### General Description

The SM15T56AY is a TVS diode that provides protection against transient voltage events such as electrostatic discharge (ESD), lightning strikes, and voltage surges. It is designed to clamp the voltage and divert the excess energy away from the protected circuitry.

### Key Features

AEC-Q101 qualified

Peak pulse power: 1500 W (10/1000  $\mu$ s) and 10 kW (8/20  $\mu$ s)

Stand-off voltage range from 5.8 V to 70 V

Unidirectional and bidirectional types

Low leakage current: 0.2  $\mu$ A at 25 °C and 1  $\mu$ A at 85 °C

Operating Tj max: 150 °C

High power capability at Tj max.: up to 1250 W (10/1000  $\mu$ s)

Lead finishing: matte tin plating

### Application

Consumer Electronics

Communication Systems

Industrial Equipment

Automotive Electronics

Power Distribution Systems

### Recommended For You

#### SMI5T68A

STMicroelectronics, Inc

DO-214AB

#### SMAJ24A-TR

STMicroelectronics, Inc

SMA

#### SM2T6V8A

STMicroelectronics, Inc

DO-216AA

**SMB0T33AY**

STMicroelectronics, Inc

SMC

**SM6T27AY**

STMicroelectronics, Inc

SMB

**SM6T33CAY**

STMicroelectronics, Inc

SMB

**SM6T36AY**

STMicroelectronics, Inc

SMB

**SMB0T30CAY**

STMicroelectronics, Inc

SMC

**SMB0T39CAY**

STMicroelectronics, Inc

DO-214AB

**SMB0T35CAY**

STMicroelectronics, Inc

SMC

**SM6T36CAY**

STMicroelectronics, Inc

SMB

**SM6T27CAY**

STMicroelectronics, Inc

SMB

**SM6T30CAY**

STMicroelectronics, Inc

SMB

**SMI5T36AY**

STMicroelectronics, Inc

SMC

**SMI5T36CAY**

STMicroelectronics, Inc

SMC