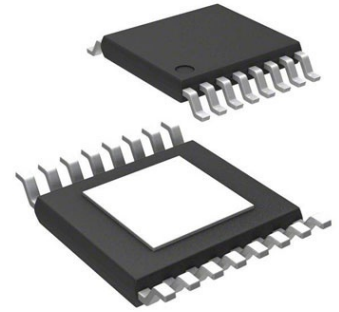


**Power Over Ethernet PD Controller 0V 57V 25.5W 16-Pin
HTSSOP EP**

Images are for reference only

[Inquiry](#)**Manufacturer:** [Texas Instruments, Inc](#)**Package/Case:** HTSSOP16**Product Type:** Power Management ICs**RoHS:** RoHS Compliant/Lead free **Lifecycle:** Active**General Description**

The TPS23751 is a 16-pin integrated circuit that combines a Power-over-Ethernet (PoE) powered device (PD) interface and a current-mode DC-DC controller optimized specifically for applications requiring high efficiency over a wide load range.

The PoE interface implements type-2 hardware classification per IEEE 802.3at. It also includes an auxiliary power detect (APD) input and a disable function (DEN). A 0.5- Ω , 100-V pass MOSFET minimizes heat dissipation and maximizes power utilization.

The DC-DC controller features internal soft-start, a bootstrap startup current source, current-mode control with slope compensation, blanking, and current limiting. Efficiency is enhanced at light loads by disabling synchronous rectification and entering variable frequency operation (VFO).

The TPS23752 is a 20-pin extended version of the TPS23751 with the addition of a Sleep Mode feature. Sleep Mode disables the converter to minimize power consumption while still generating the Maintain Power Signature (MPS) required by IEEE 802.3at.

Key Features

IEEE 802.3at Classification With Status Flag

High Efficiency Solutions Over Wide Load Range

Powers Up to 25.5 W PDs

Robust 100 V, 0.5 Ω Hotswap MOSFET

Synchronous Rectifier Disable Signal

PowerPAD? TSSOP Packages

Complete PoE Interface Plus DC-DC Controller

Adapter ORing Support

Programmable Frequency

TPS23752 Supports Ultra-Low Power Sleep Modes

-40°C to 125°C Junction Temperature Range

All trademarks are the property of their respective owners.

Description

The TPS23751 is a 16-pin integrated circuit that combines a Power-over-Ethernet (PoE) powered device (PD) interface and a current-mode DC-DC controller optimized specifically for applications requiring high efficiency over a wide load range.

The PoE interface implements type-2 hardware classification per IEEE 802.3at. It also includes an auxiliary power detect (APD) input and a disable function (DEN). A 0.5- Ω , 100-V pass MOSFET minimizes heat dissipation and maximizes power utilization.

The DC-DC controller features internal soft-start, a bootstrap startup current source, current-mode control with slope compensation, blanking, and current limiting. Efficiency is enhanced at light loads by disabling synchronous rectification and entering variable frequency operation (VFO).

The TPS23752 is a 20-pin extended version of the TPS23751 with the addition of a Sleep Mode feature. Sleep Mode disables the converter to minimize power consumption while still generating the Maintain Power Signature (MPS) required by IEEE 802.3at.

Recommended For You

TPD3S014DBVR

Texas Instruments, Inc

SOT23-6

TPS2065CDBVR

Texas Instruments, Inc

SOT23-5

TPS2557DRBT

Texas Instruments, Inc

SON8

TPS2042BDR

Texas Instruments, Inc

SOP8

TPS2051BDR

Texas Instruments, Inc

SOP8

TPL7407LPWR

Texas Instruments, Inc

TSSOP16

TPS23753APWR

Texas Instruments, Inc

TSSOP14

TPS2116DRLR

Texas Instruments, Inc

SOT5X3-8

TPS259460ARPWR

Texas Instruments, Inc

VQFN-10

TPS23751PWPR

Texas Instruments, Inc
HTSSOP16

TPS65150QPWPRQ1

Texas Instruments, Inc
HTSSOP-24

TPS2410PWR

Texas Instruments, Inc
TSSOP-14

TPS22914BYFPR

Texas Instruments, Inc
DSBGA4

TPS2115ADRBR

Texas Instruments, Inc
VSON8

TPS2113ADRBR

Texas Instruments, Inc
SON8