
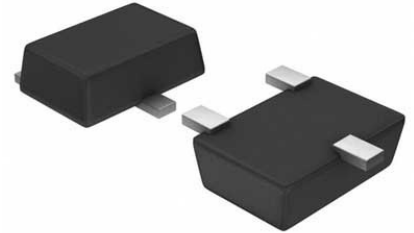


Low-Power Crystal-Based Ask Transmitter 8-Pin SOT-23 T/R

Manufacturer:	Analog Devices, Inc
Package/Case:	SOT23-8
Product Type:	RF Integrated Circuits
RoHS:	RoHS Compliant/Lead free 
Lifecycle:	Active



Images are for reference only

[Inquiry](#)

General Description

The MAX1472 is a crystal-referenced phase-locked loop (PLL) VHF/UHF transmitter designed to transmit OOK/ASK data in the 300MHz to 450MHz frequency range. The MAX1472 supports data rates up to 100kbps, and adjustable output power to more than +10dBm into a 50Ω load. The crystal-based architecture of the MAX1472 eliminates many of the common problems with SAW transmitters by providing greater modulation depth, faster frequency settling, higher tolerance of the transmit frequency, and reduced temperature dependence. Combined, these improvements enable better overall receiver performance when using a superheterodyne receiver such as the MAX1470 or MAX1473.

The MAX1472 is available in a 3mm x 3mm 8-pin SOT23 package and is specified for the automotive (-40°C to +125°C) temperature range. An evaluation kit is available. Contact Maxim Integrated for more information.

Key Features

- Single supply voltage range from 2.1V to 3.6V
- Automotive temperature range from -40°C to 125°C
- Low operating supply current is 5.3mA (50% duty cycle, f_{RF}=315MHz, 2.7V supply, 10dBm output power)
- Supports ASK with 90dB modulation depth
- Transmit efficiency with CW is 43.6% at f_{RF} = 315MHz and 41.3% at f_{RF} = 433MHz
- Transmit efficiency at 50% duty cycle is 37.6% at f_{RF} = 315MHz and 35.1% at f_{RF} = 433MHz
- Uses small low cost crystal
- Fast-on oscillator, 220μs start-up time
- Standby current of 5nA at VENABLE < VIL, TA < +85°C
- Phase noise of -84dBc/Hz at f_{OFFSET} = 100kHz, f_{RF} = 315MHz

Application

- Radio-Controlled Toys
- Remote Keyless Entry (RKE)
- RF Remote Controls
- Security Systems
- Tire-Pressure Monitoring (TPM)
- Wireless Computer Peripherals
- Wireless Game Consoles
- Wireless Sensors

Recommended For You

MAX2112EII+

Analog Devices, Inc
QFN28

MAX7058ATG+

Analog Devices, Inc
QFN24

MAX2172EIL+

Analog Devices, Inc
QFN

MAX2694EWS+T

Analog Devices, Inc
WLP-4

MAX2170EIL+T

Analog Devices, Inc
TQFN40

MAX2091EIP+

Analog Devices, Inc
QFN20

MAX66040E-000AA+

Analog Devices, Inc
BGA

MAX2659ELT+TG47

Analog Devices, Inc
QFN

MAX2016EII+T

Analog Devices, Inc
QFN

MAX2769CEII+T

Analog Devices, Inc
QFN

MAX2120CII+T

Analog Devices, Inc
QFN-20

MAX2015ETA+

Analog Devices, Inc
TDFN

MAX2686LEWS+T

Analog Devices, Inc
SMDSMT

MAX3510EEP+T

Analog Devices, Inc
SSOP20

MAX19790EIX+T

Analog Devices, Inc
QFN