
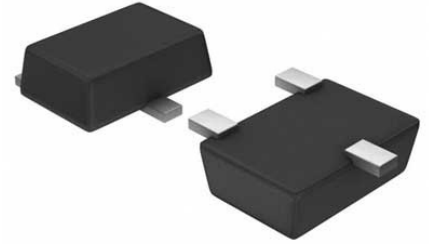


V-Ref Precision 3V 15mA Automotive 3-Pin SOT-23 T/R

Manufacturer:	Texas Instruments, Inc
Package/Case:	SOT-23
Product Type:	Power Management ICs
RoHS:	RoHS Compliant/Lead free 
Lifecycle:	Active



Images are for reference only

[Inquiry](#)

General Description

Key Features

Fixed Output Voltages of 2.048V, 2.5V, 3V, 4.096V, 5V, 8.192V, and 10V

Tight Output Tolerances and Low Temperature Coefficient
Max 0.1%, 100 ppm/°C – A Grade

Max 0.2%, 100 ppm/°C – B Grade

Max 0.5%, 100 ppm/°C – C Grade

Max 1.0%, 150 ppm/°C – D Grade

Low Output Noise: 35µVRMS Typ

Wide Operating Current Range: 45µA Typ to 15 mA

Stable With All Capacitive Loads; No Output Capacitor Required

Available in Extended Temperature Range: –40°C to 125°C

All trademarks are the property of their respective owners.

Description

The LM4040 series of shunt voltage references are versatile, easy-to-use references that cater to a vast array of applications. The 2-pin fixed-output device requires no external capacitors for operation and is stable with all capacitive loads. Additionally, the reference offers low dynamic impedance, low noise, and low temperature coefficient to ensure a stable output voltage over a wide range of operating currents and temperatures. The LM4040 uses fuse and Zener-zap reverse breakdown voltage trim during wafer sort to offer four output voltage tolerances, ranging from 0.1% (max) for the A grade to 1% (max) for the D grade. Thus, a great deal of flexibility is offered to designers in choosing the best cost-to-performance ratio for their applications.

Packaged in space-saving SC-70 and SOT-23-3 packages and requiring a minimum current of 45 µA (typ), the LM4040 also is ideal for portable applications. The LM4040xI is characterized for operation over an ambient temperature range of –40°C to 85°C. The LM4040xQ is characterized for operation over an ambient temperature range of –40°C to 125°C.

Recommended For You

LM2637M

Texas Instruments, Inc
SOP24

LM5116MH

Texas Instruments, Inc
TSSOP20

LM234Z-3

Texas Instruments, Inc
TO-92

LM27761DSGR

Texas Instruments, Inc
WSO8

LM74700QDBVRQ1

Texas Instruments, Inc
SOT23-6

LM2991S

Texas Instruments, Inc
TO-263

LM74800QDRRRQ1

Texas Instruments, Inc
WSO8-12

LMR14030SDDAR

Texas Instruments, Inc
SOP8

LM2940CT-12

Texas Instruments, Inc
TO-220

LM536035QPWPTQ1

Texas Instruments, Inc
HTSSOP-16

LM5575MH

Texas Instruments, Inc
TSSOP16

LM536013QDSXTQ1

Texas Instruments, Inc
WSO8-10

LM5160QPWPRQ1

Texas Instruments, Inc
HTSSOP14

LM5576MH

Texas Instruments, Inc
TSSOP20

LMQ61460AFSQRJRRQ1

Texas Instruments, Inc
VQFN-14