
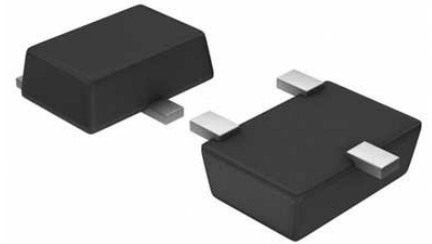


## Trans MOSFET N-CH 60V 0.36A 3-Pin SOT-23 T/R

<b>Manufacturer:</b>	<a href="#">Nexperia Semiconductor (NXP)</a>
<b>Package/Case:</b>	SOT-23
<b>Product Type:</b>	Thyristors
<b>RoHS:</b>	RoHS Compliant/Lead free 
<b>Lifecycle:</b>	Active



Images are for reference only

[Inquiry](#)

### General Description

N-channel enhancement mode Field-Effect Transistor (FET) in a small SOT23 Surface-Mounted Device (SMD) plastic package using Trench MOSFET technology.

### Key Features

- Logic-level compatible
- Very fast switching
- Trench MOSFET technology
- AEC-Q101 qualified

### Application

- Relay driver
- High-speed line driver
- Low-side load switch
- Switching circuits

### Recommended For You

#### MMBT2222A,215

Nexperia Semiconductor (NXP)  
SOT-23

#### PDTC143ET,215

Nexperia Semiconductor (NXP)  
SOT23

#### PDTC123JT,215

Nexperia Semiconductor (NXP)  
SOT-23

#### PDTC114ET,215

Nexperia Semiconductor (NXP)  
SOT-23-3

#### BC850BW,115

Nexperia Semiconductor (NXP)  
SOT323

#### BCX53-16,115

Nexperia Semiconductor (NXP)  
SOT89

**BUK9612-55B,118**

Nexperia Semiconductor (NXP)

D2PAK

**PDTC124ET,215**

Nexperia Semiconductor (NXP)

SOT23

**PBHV9050T,215**

Nexperia Semiconductor (NXP)

TO-236AB

**BCX17,215**

Nexperia Semiconductor (NXP)

SOT23

**PDTC143ZT,215**

Nexperia Semiconductor (NXP)

SOT-23

**PDTC143ZU,115**

Nexperia Semiconductor (NXP)

SOT323

**PBSM5240PF**

Nexperia Semiconductor (NXP)

DFN

**BC847A,215**

Nexperia Semiconductor (NXP)

SOT23

**PDID113ZT,215**

Nexperia Semiconductor (NXP)

SOT-23-3