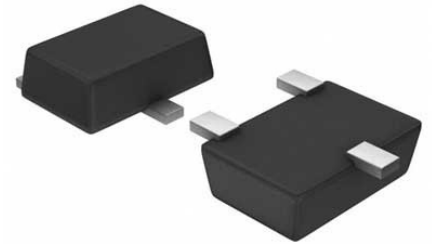


OR Controller P-channel Single 0.245Ohm 5-Pin TSOT-23

Manufacturer:	Analog Devices, Inc
Package/Case:	SOT23-5
Product Type:	Power Management ICs
Lifecycle:	Unconfirmed



Images are for reference only

[Inquiry](#)

General Description

The LTC4411 is an ideal diode IC, capable of supplying up to 2.6A from an input voltage between 2.6V and 5.5V. The LTC4411 is housed in a 5-lead 1mm profile SOT-23 package. The LTC4411 contains a 140mΩ P-channel MOSFET connecting IN to OUT. During normal forward operation, the drop across the MOSFET is regulated to as low as 28mV. Quiescent current is less than 40μA for load currents up to 100mA. If the output voltage exceeds the input voltage, the MOSFET is turned off and less than 1μA of reverse current flows from OUT to IN. Maximum forward current is limited to a constant 2.6A (typical) and internal thermal limiting circuits protect the part during fault conditions. An open-drain STAT pin indicates conduction status. The STAT pin can be used to drive an auxiliary P-channel MOSFET power switch connecting an alternate power source when the LTC4411 is not conducting forward current. An active-high control pin turns off the LTC4411 and reduces current consumption to less than 25μA. When shut off, the LTC4411 indicates this condition with a low voltage on the status signal.

Key Features

Low Loss Replacement for PowerPath

Small Regulated Forward Voltage (28mV)

2.6A Maximum Forward Current

Low Forward ON Resistance (140mΩ Max)

Low Reverse Leakage Current (<1μA)

2.6V to 5.5V Operating Range

Internal Current Limit Protection

Internal Thermal Protection

No External Active Components

Pin-Compatible Monolithic Replacement for the LTC4412

Low Quiescent Current (40μA)

Low-Profile (1mm) 5-lead SOT-23 Package

Application

Cellular Phones

Handheld Computers

Digital Cameras

USB Peripherals

Uninterrupted Supplies

Logic Controlled Power Switch

Recommended For You

LTC4412ES6

Analog Devices, Inc
SOT23-6

LTC4259ACGW-1

Analog Devices, Inc
SSOP36

LTC4259ACGW

Analog Devices, Inc
SSOP36

LTC1530IS8

Analog Devices, Inc
SOP8

LTC4252-2IMS

Analog Devices, Inc
MSOP10

LTC4412ES6#PBF

Analog Devices, Inc
SOT23-6

LTC4412ES6#TRPBF

Analog Devices, Inc
SOT23-6

LTC2942CDCB#TRMPBF

Analog Devices, Inc
DFN-6

LT1054IN8

Analog Devices, Inc
DIP-8

LTC4416EMS#PBF

Analog Devices, Inc
MSOP10

LTC4357IMS8

Analog Devices, Inc
MSOP8

LTC4414IMS8#PBF

Analog Devices, Inc
MSOP8

LTC4413EDD

Analog Devices, Inc
DFN10

LT3469EIS8#TRMPBF

Analog Devices, Inc
SOT23-8

LTC4412HVIS6

Analog Devices, Inc
SOT23-6