
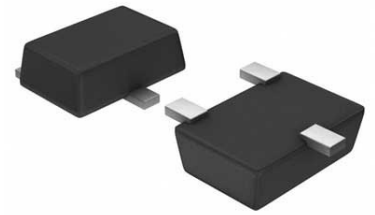


## USB Charging Port Controller Single 5.5V Automotive 6-Pin SOT-23 T/R

<b>Manufacturer:</b>	<a href="#">Texas Instruments, Inc</a>
<b>Package/Case:</b>	SOT23-6
<b>Product Type:</b>	Switches
<b>RoHS:</b>	RoHS Compliant/Lead free 
<b>Lifecycle:</b>	Active



Images are for reference only

[Inquiry](#)

### General Description

The TPS251xx devices are USB dedicated charging port (DCP) controllers. An auto-detect feature monitors USB data line voltage, and automatically provides the correct electrical signatures on the data lines to charge compliant devices among the following dedicated charging schemes:

- Divider 1 DCP, required to apply 2 V and 2.7 V on the D+ and D- Lines respectively (TPS2513, TPS2514)
- Divider 2 DCP, required to apply 2.7 V and 2 V on the D+ and D- Lines respectively (TPS2513, TPS2514)
- Divider 3 DCP, required to apply 2.7 V and 2.7 V on the D+ and D- Lines respectively (TPS2513A, TPS2514A)
- BC1.2 DCP, required to short the D+ Line to the D- Line
- Chinese Telecom Standard YD/T 1591-2009 Shorted Mode, required to short the D+ Line to the D- Line
- 1.2 V on both D+ and D- Lines

### Key Features

- Supports USB DCP Shorting D+ Line to D- Line per USB Battery Charging Specification, Revision 1.2 (BC1.2)
- Supports Shorted Mode (Shorting D+ Line to D- Line) per Chinese Telecommunication Industry Standard YD/T 1591-2009
- Supports USB DCP Applying 2.7 V on D+ Line and 2 V on D- line (or USB DCP Applying 2 V on D+ Line and 2.7 V on D- Line) (TPS2513, TPS2514)
- Supports USB DCP Applying 2.7 V on D+ Line and 2.7 V on D- Line (TPS2513A, TPS2514A)
- Supports USB DCP Applying 1.2 V on D+ and D- Lines
- Automatically Switch D+ and D- Lines Connections for an Attached Device
- Dual USB Port Controller (TPS2513, TPS2513A)
- Single USB Port Controller (TPS2514, TPS2514A)
- Operating Range: 4.5 V to 5.5 V
- Available in SOT23-6 Package

### Recommended For You

**TPD3S014DBVR**

Texas Instruments, Inc  
SOT23-6

**TPS2065CDBVR**

Texas Instruments, Inc  
SOT23-5

**TPS2557DRBT**

Texas Instruments, Inc  
SON8

**TPS2042BDR**

Texas Instruments, Inc  
SOP8

**TPS2051BDR**

Texas Instruments, Inc  
SOP8

**TPL7407LPWR**

Texas Instruments, Inc  
TSSOP16

**TPS23753APWR**

Texas Instruments, Inc  
TSSOP14

**TPS2116DRLR**

Texas Instruments, Inc  
SOT5X3-8

**TPS259460ARPWR**

Texas Instruments, Inc  
VQFN-10

**TPS23751PWPR**

Texas Instruments, Inc  
HTSSOP16

**TPS65150QPWPRQ1**

Texas Instruments, Inc  
HTSSOP-24

**TPS2410PWR**

Texas Instruments, Inc  
TSSOP-14

**TPS22914BYFPR**

Texas Instruments, Inc  
DSBGA4

**TPS2115ADRBR**

Texas Instruments, Inc  
VSON8

**TPS2113ADRBR**

Texas Instruments, Inc  
SON8