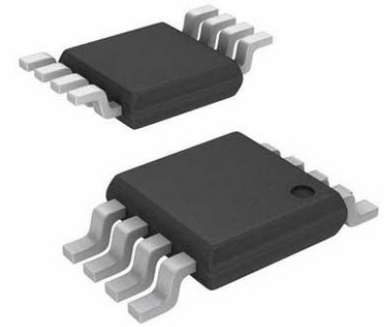


## Power Over Ethernet PD Controller 0V 57V 13W 8-Pin TSSOP



Images are for reference only

[Inquiry](#)

**Manufacturer:** [Texas Instruments, Inc](#)

**Package/Case:** TSSOP8

**Product Type:** Power Management ICs

**RoHS:** RoHS Compliant/Lead free 

**Lifecycle:** Active

### General Description

These easy-to-use 8-pin integrated circuits contain all of the features needed to develop an IEEE 802.3af compliant powered device (PD). The TPS2375 family is a second generation PDC (PD Controller) featuring 100-V ratings and a true open-drain, power-good function.

In addition to the basic functions of detection, classification and undervoltage lockout (UVLO), these controllers include an adjustable inrush limiting feature. The TPS2375 has 802.3af compliant UVLO limits, the TPS2377 has legacy UVLO limits, and the TPS2376 has a programmable UVLO with a dedicated input pin.

The TPS2375 family specifications incorporate a voltage offset of 1.5 V between its limits and the IEEE 802.3af specifications to accommodate the required input diode bridges used to make the PD polarity insensitive.

Additional resources can be found on the TI Web site [www.ti.com](http://www.ti.com).

## Key Features

Fully Supports IEEE 802.3af Specification

Integrated 0.58-Ω, 100-V, Low-Side Switch

15-kV System Level ESD Capable

Supports Use of Low-Cost Silicon Rectifiers

Programmable Inrush Current Control

Fixed 450-mA Current Limit

Fixed and Adjustable UVLO Options

Open-Drain, Power-Good Reporting

Overtemperature Protection

Industrial Temperature Range: -40°C to 85°C

8-Pin SOIC and TSSOP Packages

### APPLICATIONS

VoIP Phones

WLAN Access Points

Security Cameras

Internet Appliances

POS Terminals

### Description

These easy-to-use 8-pin integrated circuits contain all of the features needed to develop an IEEE 802.3af compliant powered device (PD). The TPS2375 family is a second generation PDC (PD Controller) featuring 100-V ratings and a true open-drain, power-good function.

In addition to the basic functions of detection, classification and undervoltage lockout (UVLO), these controllers include an adjustable inrush limiting feature.

The TPS2375 has 802.3af compliant UVLO limits, the TPS2377 has legacy UVLO limits, and the TPS2376 has a programmable UVLO with a dedicated input pin.

The TPS2375 family specifications incorporate a voltage offset of 1.5 V between its limits and the IEEE 802.3af specifications to accommodate the required input diode bridges used to make the PD polarity insensitive.

Additional resources can be found on the TI Web site [www.ti.com](http://www.ti.com).

## Recommended For You

---

### TPD3S014DBVR

Texas Instruments, Inc

SOT23-6

### TPS2065CDBVR

Texas Instruments, Inc

SOT23-5

### TPS2557DRBT

Texas Instruments, Inc

SON8

### TPS2042BDR

Texas Instruments, Inc

SOP8

### TPS2051BDR

Texas Instruments, Inc

SOP8

### TPL7407LPWR

Texas Instruments, Inc

TSSOP16

**TPS23753APWR**

Texas Instruments, Inc  
TSSOP14

**TPS2116DRLR**

Texas Instruments, Inc  
SOT5X3-8

**TPS259460ARPWR**

Texas Instruments, Inc  
VQFN-10

**TPS23751PWPR**

Texas Instruments, Inc  
HTSSOP16

**TPS65150QPWRQ1**

Texas Instruments, Inc  
HTSSOP-24

**TPS2410PWR**

Texas Instruments, Inc  
TSSOP-14

**TPS22914BYFPR**

Texas Instruments, Inc  
DSBGA4

**TPS2115ADRBR**

Texas Instruments, Inc  
VSON8

**TPS2113ADRBR**

Texas Instruments, Inc  
SON8