
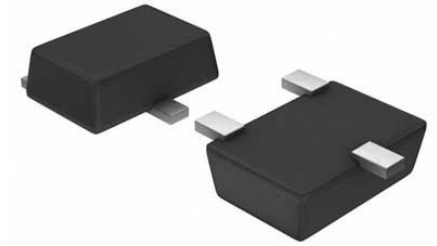


## Controller 2.5V to 18V 6-Pin SOT-26 T/R

<b>Manufacturer:</b>	<a href="#">Diodes Inc</a>
<b>Package/Case:</b>	SOT23-6
<b>Product Type:</b>	Power Management ICs
<b>RoHS:</b>	RoHS Compliant/Lead free 
<b>Lifecycle:</b>	Active



Images are for reference only

[Inquiry](#)

### General Description

The AP4313 is a highly integrated solution for a constant voltage/constant current mode SMPS application. The AP4313 contains one 1.21V voltage reference with  $\pm 1\%$  accuracy, one current sensing circuit and two operational amplifiers. Combining the voltage reference with one operational amplifier makes AP4313 an ideal voltage controller for use in adapters and battery chargers. The other low voltage reference combined with the other operational amplifier makes it an ideal current limiter for output low side current sensing.

### Key Features

- Constant Voltage and Constant Current Control
- Precision Internal Voltage Reference
- Few External Components
- Easy Compensation
- Low Supply Current: 0.5mA
- Operating Temperature Range: -40 to 105°C

### Application

- Adapters
- Battery Chargers

### Recommended For You

#### AP3012KTR-G1

Diodes Inc  
SOT23-5

#### AP2171WG-7

Diodes Inc  
SOT23-5

#### AP2411MP-13

Diodes Inc  
MSOP8

**AP22966DC8-7**

Diodes Inc

DFN-14

**APX811-29UG-7**

Diodes Inc

SOT143

**AP9101CAK6-ABTRG1**

Diodes Inc

SOT-26

**AP2511M8-13**

Diodes Inc

MSOP8

**AP2181DMPG-13**

Diodes Inc

MSOP8

**AP2161DSG-13**

Diodes Inc

SOP-8

**AP2181MPG-13**

Diodes Inc

MSOP8

**AP2337SA-7**

Diodes Inc

SOT23

**AP2151AW-7**

Diodes Inc

SOT25

**AP2411S-13**

Diodes Inc

SOP8

**AP2161WG-7**

Diodes Inc

SOT23-5

**AP2821KTR-G1**

Diodes Inc

SOT23-5