

Single 5.5V 0.05A to 0.6A 6-Pin SOT-23 T/R

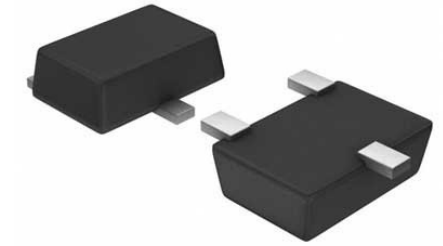
Manufacturer: [Maxim Integrated](#)

Package/Case: SOT23-6

Product Type: Switches

RoHS: RoHS Compliant/Lead free 

Lifecycle: Active



Images are for reference only

[Inquiry](#)

General Description

Key Features

Current limit reaction time of 5 μ s

Operating temperature range from -40°C to 125°C

\pm 10% accurate current limit

Overload active-low FLAG threshold

Low dropout voltage

Short circuit and reverse current protection

Turn-on time of 120 μ s and turn-off time of 120 μ s

Supply current of 170 μ A

Active-high on input polarity and normal short circuit response

Maximum retry time of 723.2ms and blanking time of 16.3ms

Recommended For You

MAX1636EAP

Maxim Integrated

SSOP20

MAX1758EAI+

Maxim Integrated

SSOP28

MAX1673ESA+

Maxim Integrated

SOP8

MAX1682EUK+T

Maxim Integrated

SOT23-5

MAX1720EUT+T

Maxim Integrated

SOT23-6

MAX845ESA+T

Maxim Integrated

SOP-8

MAX1681ESA+

Maxim Integrated

SOP-8

MAX17113EIL+

Maxim Integrated

QFN

MAX690CPA+

Maxim Integrated

DIP8

MAX690MJA

Maxim Integrated

CDIP8

MAX6107EUR+T

Maxim Integrated

SOT23-3

MAX5920BESA+

Maxim Integrated

SOP-8

MAX5922AEUI+

Maxim Integrated

TSSOP28

MAX5900ABETT+T

Maxim Integrated

TDFN-6

MAX5903LBEUT

Maxim Integrated

SOT23-6