

ESD Suppressor Diode TVS Bi-Dir 24V 43Vc Automotive 3-Pin SOT-23 T/R

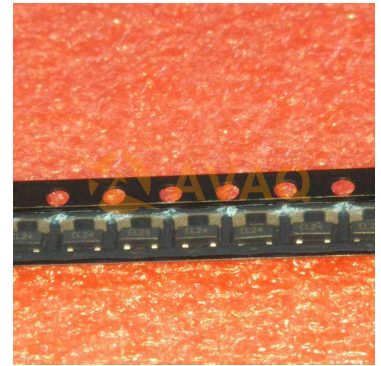
Manufacturer: [STMicroelectronics, Inc](#)

Package/Case: SOT-23-3

Product Type: Thyristors

RoHS: RoHS Compliant/Lead free 

Lifecycle: Active



Images are for reference only

[Inquiry](#)

General Description

These dual-line CAN transceiver protection devices (TVS) protect both CAN H and CAN L signals of automotive CAN PHY against ISO 7637-3 transients and ESD (electrostatic discharge). ESDCAN series complies with all the physical layer constraints (jump start, reverse polarity, ...) without compromising the low clamping voltage for an efficient CAN bus protection (controller area network) or LIN bus protection (local interconnect network). The low line capacitance versions make them compliant with CAN-FD and high speed buses like FlexRay, USB, and even the future CAN XL.

Key Features

AEC-Q101 qualified

Dual-line ESD and EOS protection

Breakdown voltage: VBR

ESDCAN01-2BLY: 25 V

ESDCAN24-2BLY: 27 V

ESDCAN04-2BLY: 27.5 V

ESDCAN06-2BLY: 38 V

ESDCAN01-2BLY: 25 V

ESDCAN24-2BLY: 27 V

ESDCAN04-2BLY: 27.5 V

ESDCAN06-2BLY: 38 V

Bidirectional device

Max pulse power up to 230 W (8/20 μ s)

Low clamping factor V_{CL} / V_{BR}

ECOPACK2 ROHS compliant component

UL94, V0

J-STD-020 MSL level 1

IPC7531 footprint and JEDEC registered package

ISO 16750-2 (Jump start and reversed battery tests for 12 V system))

IEC 61000-4-4 (EFT)

4 kV

4 kV

ISO 10605 C = 150 pF, R = 330 Ω , exceeds level 4:

ISO 10605 C = 330 pF, R = 330 Ω exceeds level 4:

ISO 10605 C = 330 pF, R = 2 k Ω exceeds level 4:

ISO 7637-3:

Pulse 3a: -150 V

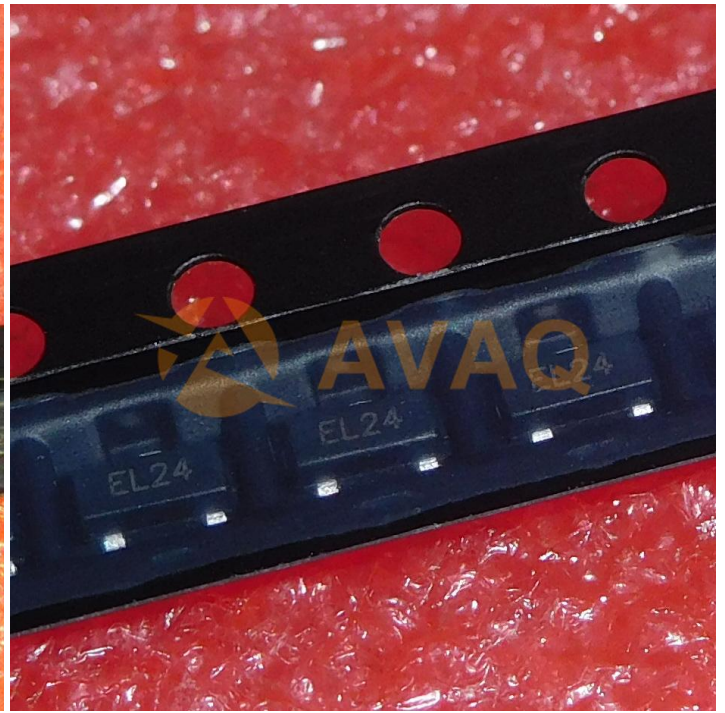
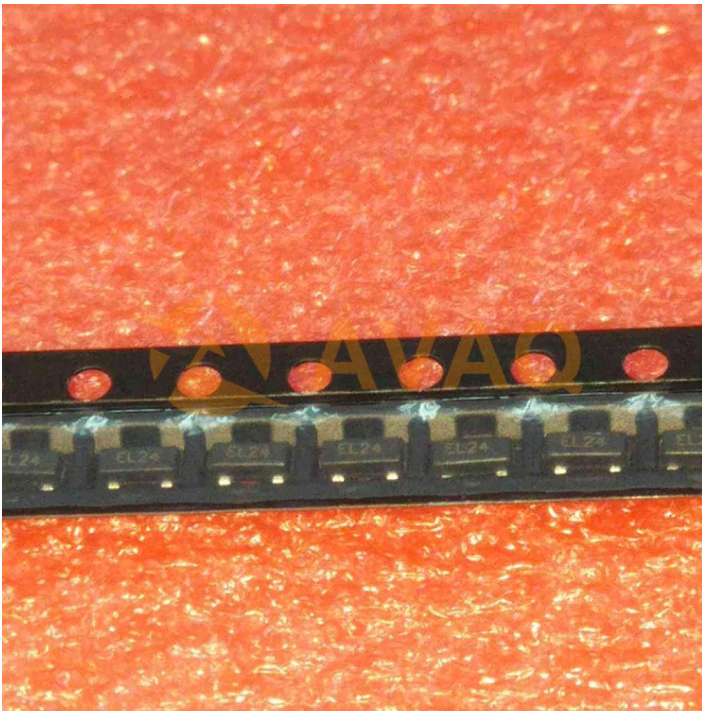
Pulse 3b: +150 V

Pulse 2a: +/- 85 V

Pulse 3a: -150 V

Pulse 3b: +150 V

Pulse 2a: +/- 85 V



Recommended For You

ESDLINI524BJ

STMicroelectronics, Inc

SOD-323

ESDA6V1W5

STMicroelectronics, Inc

SOT-353

ESDA14V2LY

STMicroelectronics, Inc

SOT-23

ESDA5V3LY

STMicroelectronics, Inc

SOT-23

ESDALC6V1P5

STMicroelectronics, Inc

SOT-665

ESDAXLC6-1BU2

STMicroelectronics, Inc

ST0201

ESDALCL5-1BM2

STMicroelectronics, Inc

SOD882

ESDA14V2SC6

STMicroelectronics, Inc

SOT23-6

ESDALC6V1-1BU2

STMicroelectronics, Inc

ST0201

ESDA25B1RL

STMicroelectronics, Inc

SOP8

ESDALC6V1W5

STMicroelectronics, Inc

SOT353

ESDA8V2-1J

STMicroelectronics, Inc

SOD-323

ESDA5-1BF4

STMicroelectronics, Inc

SMD

ESDA14V2-2BF3

STMicroelectronics, Inc

BGA

ESDA25W

STMicroelectronics, Inc

SOT323