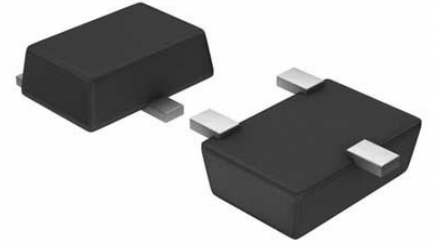


V-Ref Precision 2.5V 20mA Automotive 3-Pin SOT-23 T/R

Manufacturer: [Texas Instruments, Inc](#)**Package/Case:** SOT23-3**Product Type:** Power Management ICs**RoHS:** RoHS Compliant/Lead free **Lifecycle:** Active

Images are for reference only

[Inquiry](#)**General Description**

The TL4050-Q1 family of shunt voltage references are versatile easy-to-use references suitable for a wide array of applications. The two-terminal fixed-output device requires no external capacitors for operation and is stable with all capacitive loads. Additionally, the reference offers low dynamic impedance, low noise, and low temperature coefficient to ensure a stable output voltage over a wide range of operating currents and temperatures.

The TL4050-Q1 is available in three initial tolerances, ranging from 0.1% (maximum) for the A grade to 0.5% (maximum) for the C grade. Thus, a great deal of flexibility is available to designers in choosing the best cost-to-performance ratio for their applications. Packaged in the space-saving SOT-23-3 and SC-70 packages and requiring a minimum current of 45 μ A (typical), the TL4050-Q1 also is ideal for portable applications.

The TL4050x-Q1 characterization is for operation over an ambient temperature range of -40°C to 125°C .

Key Features

Qualified for Automotive Applications

Fixed Output Voltages of 2.048V, 2.5V, 4.096V, 5V

Tight Output Tolerances and Low Temperature Coefficient
Max 0.1%, 50 ppm/°C – A Grade

Max 0.2%, 50 ppm/°C – B Grade

Max 0.5%, 50 ppm/°C – C Grade

Low Output Noise: 41µVRMS Typ

Wide Operating Current Range: 60µA Typ to 15 mA

Stable With All Capacitive Loads; No Output Capacitor Required

Available in Extended Temperature Range: –40°C to 125°C

Description

The TL4050-Q1 family of shunt voltage references are versatile easy-to-use references suitable for a wide array of applications. The two-terminal fixed-output device requires no external capacitors for operation and is stable with all capacitive loads. Additionally, the reference offers low dynamic impedance, low noise, and low temperature coefficient to ensure a stable output voltage over a wide range of operating currents and temperatures.

The TL4050-Q1 is available in three initial tolerances, ranging from 0.1%(maximum) for the Agrade to 0.5%(maximum) for the Cgrade. Thus, a great deal of flexibility is available to designers in choosing the best cost-to-performance ratio for their applications. Packaged in the space-saving SOT-23-3 and SC-70 packages and requiring a minimum current of 45µA(typical), the TL4050-Q1 also is ideal for portable applications.

The TL4050x-Q1 characterization is for operation over an ambient temperature range of –40°C to 125°C.

Recommended For You

TL2843P

Texas Instruments, Inc

DIP8

TL431CP

Texas Instruments, Inc

DIP8

TL7705ACDR

Texas Instruments, Inc

SOP8

TL3843P

Texas Instruments, Inc

DIP8

TL497ACN

Texas Instruments, Inc

DIP14

TL3845P

Texas Instruments, Inc

DIP8

TL494CD

Texas Instruments, Inc

SOP-16

TL4311DBVR

Texas Instruments, Inc

SOT23-5

TL494CN

Texas Instruments, Inc

DIP

TL431CDBVR

Texas Instruments, Inc

SOT23-5

TL7705ACP

Texas Instruments, Inc

DIP8

TL3842P

Texas Instruments, Inc

DIP8

TLV73325PDBVT

Texas Instruments, Inc

SOT23-5

TLV73333PDBVR

Texas Instruments, Inc

SOT23-5

TL431BIDBZT

Texas Instruments, Inc

SOT23-3