
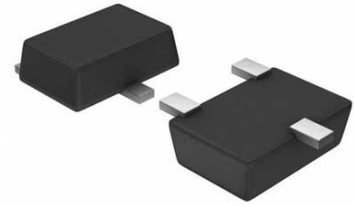


## V-Ref Adjustable 1.24V to 10V 12mA Automotive 3-Pin SOT-23 T/R

<b>Manufacturer:</b>	<a href="#">Texas Instruments, Inc</a>
<b>Package/Case:</b>	SOT-23-3
<b>Product Type:</b>	Power Management ICs
<b>RoHS:</b>	RoHS Compliant/Lead free 
<b>Lifecycle:</b>	Active



Images are for reference only

[Inquiry](#)

### General Description

Avaq Semiconductor offers the highly versatile and reliable LM4051AIM3-ADJ/NOPB driver, produced by Texas Instruments, Inc. With its multifunctional and high-performance capabilities, this component is an excellent choice for a wide range of electronic projects.

To ensure that you have all the necessary information to make the most of this component, Avaq provides a free datasheet PDF, as well as circuit diagrams, pin layouts, pin details, pin voltage ratings, and equivalent components for the LM4051AIM3-ADJ/NOPB.

Avaq also offers free samples. Simply fill out and submit the sample request form to receive your free samples for testing. If you have any questions, please feel free to contact us at ar

### Recommended For You

<b>LM2637M</b>	<b>LM5116MH</b>	<b>LM234Z-3</b>
Texas Instruments, Inc	Texas Instruments, Inc	Texas Instruments, Inc
SOP24	TSSOP20	TO-92
<b>LM27761DSGR</b>	<b>LM74700QDBVRQ1</b>	<b>LM2991S</b>
Texas Instruments, Inc	Texas Instruments, Inc	Texas Instruments, Inc
WSO8	SOT23-6	TO-263
<b>LM74800QDRRRQ1</b>	<b>LMR14030SDDAR</b>	<b>LM2940CT-12</b>
Texas Instruments, Inc	Texas Instruments, Inc	Texas Instruments, Inc
WSO-12	SOP8	TO-220
<b>LM536035QPWPTQ1</b>	<b>LM5575MH</b>	<b>LM536013QDSXTQ1</b>
Texas Instruments, Inc	Texas Instruments, Inc	Texas Instruments, Inc
HTSSOP-16	TSSOP16	WSO-10
<b>LM5160QPWPRQ1</b>	<b>LM5576MH</b>	<b>LMQ61460AFSQRJRRQ1</b>
Texas Instruments, Inc	Texas Instruments, Inc	Texas Instruments, Inc
HTSSOP14	TSSOP20	VQFN-14